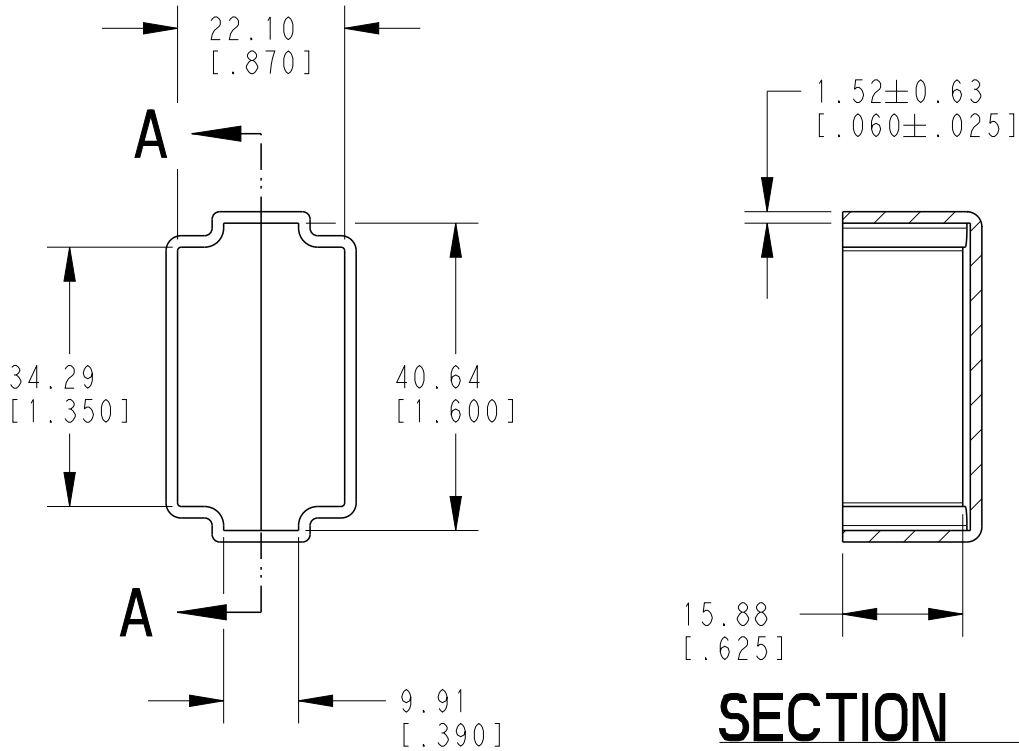


REVISIONS					
P	LTR	DESCRIPTION	DATE	DWN	APVD
	A	NEW RELEASE PER ECO-14-008764	27JUN2014	DM	DM
	A1	REVISED PER ECR-18-006853	03MAY2018	JA	DM



**SECTION A-A**

3. THIS ACCESSORY PART IS PROVIDED WITHOUT TYPICAL TRANSPORTATION INDUSTRY PROCESS CONTROLS. NO VALIDATION TESTING HAS BEEN PERFORMED. CUSTOMER IS RESPONSIBLE FOR DETERMINING PRODUCT PERFORMANCE AND SUITABILITY FOR APPLICATION.
2. TEMPERATURE RATING: -29°C TO +100°C [-20°F TO +212°F]
1. THIS PART IS USED ON DT04-12PX (X=A,B,C,D KEYS) RECEPTACLES WITH ANY MODIFICATION.

NOTES:

TE INTERNAL PN	DEUTSCH PN
DT12P-DC	DT12P-DC

DIMENSIONS: mm [INCHES]	DWN D.MEYER	27JUN2017	MATERIAL	PVC	FINISH	
	CHK R.MESSENGER	27JUN2017				
TOLERANCES UNLESS OTHERWISE SPECIFIED:	APVD D.MEYER	27JUN2014				
0 PLC ±	PRODUCT SPEC		NAME DUST CAP, RECEPTACLE, 12 PIN DT SERIES			
1 PLC ±	APPLICATION SPEC		SIZE	CAGE CODE	DRAWING NO	RESTRICTED TO
2 PLC ±			A 4	4AFU8	Ⓒ=DT12P-DC	-
3 PLC ±0.63 [.025]			WEIGHT 6.00g			
4 PLC ±			CUSTOMER DRAWING			
ANGLES ±0°30'0"			SCALE	1:1	SHEET	1 OF 1
			REV A1			

2018

RELEASED FOR PUBLICATION

THIS DRAWING IS UNPUBLISHED.

ALL RIGHTS RESERVED.

BY TE CONNECTIVITY

© COPYRIGHT 2014