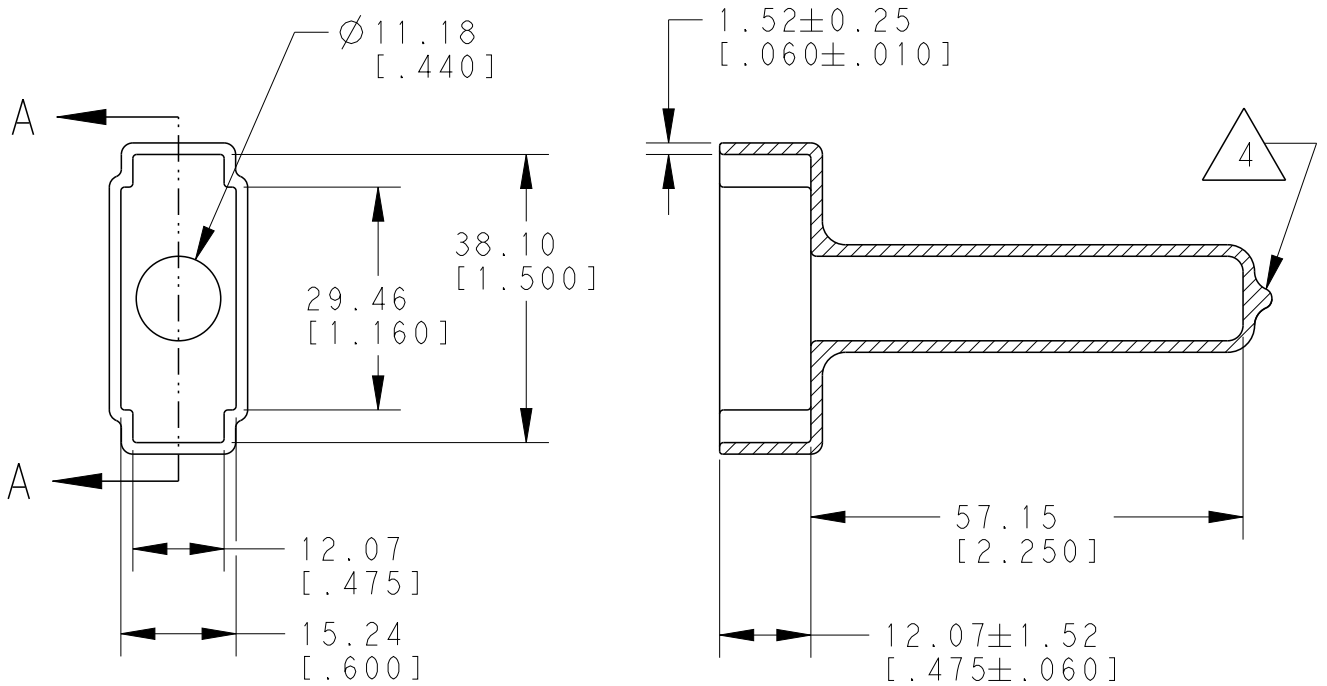


REVISIONS					
P	LTR	DESCRIPTION	DATE	DWN	APVD
	A	NEW RELEASE PER ECO-14-010245	08-05-14	DM	DM
	A1	REVISED PER PCN :E-18-002290	15FEB2018	DD	DM



## SECTION A-A

- 4 SMALL MATERIAL EXTENSION IS ACCEPTABLE ON THIS END ALL AROUND.
3. THIS ACCESSORY PART IS PROVIDED WITHOUT TYPICAL TRANSPORTATION INDUSTRY PROCESS CONTROLS. NO VALIDATION TESTING HAS BEEN PERFORMED. CUSTOMER IS RESPONSIBLE FOR DETERMINING PRODUCT PERFORMANCE AND SUITABILITY FOR APPLICATION
  2. TEMPERATURE RATING: -29°C TO +100°C [-20°F TO +212°F]
  1. THIS PART IS USED ON DTM06-12SX (X=A,B,C,D KEYS) PLUG WITH ANY MODIFICATION THAT DOES NOT INCLUDE AN END CAP.

NOTES:

2014  
 RELEASED FOR PUBLICATION  
 ALL RIGHTS RESERVED.  
 THIS DRAWING IS UNPUBLISHED.  
 © COPYRIGHT 2014 BY TE CONNECTIVITY

DIMENSIONS: mm [INCH]	DWN D.MEYER	07JUL2014	MATERIAL	PVC	FINISH	GRAY
	CHK B.MILLIGAN	07JUL2014	TE Connectivity			
TOLERANCES UNLESS OTHERWISE SPECIFIED:	APVD D.MEYER	07JUL2014				
	0 PLC ±	PRODUCT SPEC	SIZE	CAGE CODE	DRAWING NO	RESTRICTED TO
1 PLC ±	APPLICATION SPEC	A	4	4AFU8	C=DTM12S-BT	-
2 PLC ±	WEIGHT	8.00 g	SCALE			
3 PLC ±0.63 [.025]		CUSTOMER DRAWING	SCALE		SHEET 1 OF 1	
4 PLC ±			1:1		REV A1	
ANGLES ± 5°						